

# CPST

## Test Report 测试报告

No. C160725014001  
编号: C160725014001

Date: Jul 28, 2016  
日期: 2016年07月28日

Page 1 of 13  
第1页,共13页

HUIZHOU CHAOREN TECHNOLOGY CO., LTD

惠州市潮人科技有限公司

3/F OF XINLE, XINLE INDUSTRIAL MALL, MA'AN TOWN, HUICEHNG DISTRICT, HUIZHOU CITY

惠州市惠城区马安镇新乐工业城新乐三楼

The following samples were submitted and identified on behalf of the clients as

以下测试之样品是由申请者所提供及确认

Sample Name:	Packing adhesive tape
样品名称:	封箱胶纸
CPST Internal Reference No:	C160725014
编号:	C160725014
Date of Sample Received:	Jul 25, 2016
收样日期:	2016年07月25日
Testing Period:	Jul 25, 2016 to Jul 28, 2016
测试周期:	2016年07月25日至2016年07月28日
Test Method:	Please refer to next pages
测试方法:	请参见下一页
Test Result:	Please refer to next pages
测试结果:	请参见下一页

Signed for and on behalf of  
Euronos Consumer Products Testing Service Co., Ltd



TESTED BY :

*Andy Wang*

Wang Guang Yu, Anndy  
Project Leader

REVIEWED BY:

*Cheryl Li*

Li Hui Lian, Cheryl  
Laboratory Supervisor

APPROVED BY:

*Will Pan*

Pan Jian Ding, Will  
Technical Supervisor

This Test Report is issued by the Company subject to its General Conditions of Service printed overleaf or available on request and accessible at [www.cpstlab.com](http://www.cpstlab.com). Attention is drawn to the limitations of liability, indemnification and jurisdictional issues defined therein. Unless otherwise stated the results shown in the test report refer only to the sample(s) tested. This test report cannot be reproduced, except in full, without prior written permission of the Company. Any unauthorized alteration, forgery or falsification of the content or appearance of this report is unlawful and offenders may be prosecuted to the fullest extent of the law.

# CPST

## Test Report 测试报告

No. C160725014001  
编号: C160725014001

Date: Jul 28, 2016  
日期: 2016年07月28日

Page 2 of 13  
第2页,共13页

\*\*\*\*\*  
CONCLUSION :

结 论:

TESTED SAMPLES

测试样品

TEST ITEM

测试项目

RESULT

结果

Packing adhesive tape  
封箱胶纸

1.RoHS Directive 2011/65/EU Annex II amending Annex  
(EU)2015/863

1.RoHS 指令2011/65/EU附录II的修正指令(EU)2015/863

— Lead, Cadmium, Mercury, Hexavalent Chromium, PBBs  
and PBDEs Content

— 铅、汞、镉、六价铬、多溴联苯和多溴联苯醚含量

— Di-(2-ethylhexyl) phthalate(DEHP), Benzylbutyl phthalate(BBP),  
Dibutyl phthalate (DBP), Diisobutyl phthalate(DIBP) Content

— 邻苯二甲酸二(2-乙基己基)酯(DEHP)、邻苯二甲酸苯基丁酯  
(BBP)、邻苯二甲酸二丁酯(DBP)、邻苯二甲酸二异丁酯(DIBP)含  
量

2.Halogens(Fluorine, Chlorine, Bromine, Iodine)Content

— IEC/EN61249-2-21:2003

2. 卤素(氟、氯、溴、碘)含量测试

— IEC/EN61249-2-21:2003

3.Phthalates Content

3.邻苯二甲酸酯含量

**PASS**  
合格

**PASS**  
合格

**PASS**  
合格

**See the results**

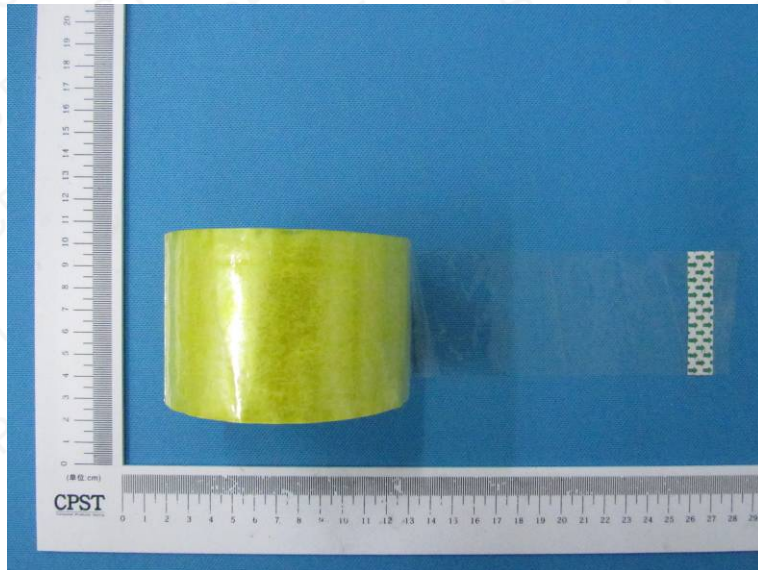
**参见结果**  
\*\*\*\*\*

This Test Report is issued by the Company subject to its General Conditions of Service printed overleaf or available on request and accessible at [www.cpstlab.com](http://www.cpstlab.com). Attention is drawn to the limitations of liability, indemnification and jurisdictional issues defined therein. Unless otherwise stated the results shown in the test report refer only to the sample(s) tested. This test report cannot be reproduced, except in full, without prior written permission of the Company. Any unauthorized alteration, forgery or falsification of the content or appearance of this report is unlawful and offenders may be prosecuted to the fullest extent of the law.



**Photo of the Submitted Sample**

**递交样品照片**



This Test Report is issued by the Company subject to its General Conditions of Service printed overleaf or available on request and accessible at [www.cpstlab.com](http://www.cpstlab.com). Attention is drawn to the limitations of liability, indemnification and jurisdictional issues defined therein. Unless otherwise stated the results shown in the test report refer only to the sample(s) tested. This test report cannot be reproduced, except in full, without prior written permission of the Company. Any unauthorized alteration, forgery or falsification of the content or appearance of this report is unlawful and offenders may be prosecuted to the fullest extent of the law.

## Test Report 测试报告

No. C160725014001  
编号: C160725014001

Date: Jul 28, 2016  
日期: 2016年07月28日

Page 4 of 13  
第4页,共13页

### Test Result(s):

#### 测试结果:

Description of Specimen : Transparent adhesive tape  
样品描述 : 透明胶带

### 1. Lead, Cadmium, Mercury, Hexavalent Chromium, PBBs and PBDEs—RoHS Directive 2011/65/EU

#### Annex II amending Annex (EU)2015/863

### 1. 铅、汞、镉、六价铬、多溴联苯和多溴联苯醚含量—RoHS 指令 2011/65/EU 附录 II 的修正指令(EU)2015/863

Test Items 测试项目	Unit 单位	Test Method 测试方法	Result 结果	MDL 检出限	Limit 限值
Lead (Pb)/铅	mg/kg	IEC 62321-5:2013, ICP-OES	N.D.	2	1000
Mercury (Hg)/汞	mg/kg	IEC 62321-4:2013, ICP-OES	N.D.	2	1000
Cadmium(Cd)/镉	mg/kg	IEC 62321-5:2013, ICP-OES	N.D.	2	100
Hexavalent Chromium (CrVI)/六价铬	mg/kg	IEC 62321:2008, UV-VIS	N.D.	2	1000
Monobromobiphenyl/一溴联苯	mg/kg	IEC 62321-6: 2015, GC-MS	N.D.	5	-
Dibromobiphenyl/二溴联苯	mg/kg	IEC 62321-6: 2015, GC-MS	N.D.	5	-
Tribromobiphenyl/三溴联苯	mg/kg	IEC 62321-6: 2015, GC-MS	N.D.	5	-
Tetrabromobiphenyl/四溴联苯	mg/kg	IEC 62321-6: 2015, GC-MS	N.D.	5	-
Pentabromobiphenyl/五溴联苯	mg/kg	IEC 62321-6: 2015, GC-MS	N.D.	5	-
Hexabromobiphenyl/六溴联苯	mg/kg	IEC 62321-6: 2015, GC-MS	N.D.	5	-
Heptabromobiphenyl/七溴联苯	mg/kg	IEC 62321-6: 2015, GC-MS	N.D.	5	-
Octabromobiphenyl/八溴联苯	mg/kg	IEC 62321-6: 2015, GC-MS	N.D.	5	-
Nonabromobiphenyl/九溴联苯	mg/kg	IEC 62321-6: 2015, GC-MS	N.D.	5	-
Decabromobiphenyl/十溴联苯	mg/kg	IEC 62321-6: 2015, GC-MS	N.D.	5	-
Sum of PBBs/多溴联苯总和	mg/kg	-	N.D.	-	1000
Monobromodiphenyl ether/一溴联苯醚	mg/kg	IEC 62321-6: 2015, GC-MS	N.D.	5	-
Dibromodiphenyl ether/二溴联苯醚	mg/kg	IEC 62321-6: 2015, GC-MS	N.D.	5	-
Tribromodiphenyl ether/三溴联苯醚	mg/kg	IEC 62321-6: 2015, GC-MS	N.D.	5	-
Tetrabromodiphenyl ether/四溴联苯醚	mg/kg	IEC 62321-6: 2015, GC-MS	N.D.	5	-
Pentabromodiphenyl ether/五溴联苯醚	mg/kg	IEC 62321-6: 2015, GC-MS	N.D.	5	-
Hexabromodiphenyl ether/六溴联苯醚	mg/kg	IEC 62321-6: 2015, GC-MS	N.D.	5	-
Heptabromodiphenyl ether/七溴联苯醚	mg/kg	IEC 62321-6: 2015, GC-MS	N.D.	5	-
Octabromodiphenyl ether/八溴联苯醚	mg/kg	IEC 62321-6: 2015, GC-MS	N.D.	5	-
Nonabromodiphenyl ether/九溴联苯醚	mg/kg	IEC 62321-6: 2015, GC-MS	N.D.	5	-
Decabromodiphenyl ether/十溴联苯醚	mg/kg	IEC 62321-6: 2015, GC-MS	N.D.	5	-
Sum of PBDEs/多溴联苯醚总和	mg/kg	-	N.D.	-	1000

This Test Report is issued by the Company subject to its General Conditions of Service printed overleaf or available on request and accessible at [www.cpstlab.com](http://www.cpstlab.com). Attention is drawn to the limitations of liability, indemnification and jurisdictional issues defined therein. Unless otherwise stated the results shown in the test report refer only to the sample(s) tested. This test report cannot be reproduced, except in full, without prior written permission of the Company. Any unauthorized alteration, forgery or falsification of the content or appearance of this report is unlawful and offenders may be prosecuted to the fullest extent of the law.

## Test Report 测试报告

No. C160725014001  
编号: C160725014001

Date: Jul 28, 2016  
日期: 2016年07月28日

Page 5 of 13  
第5页,共13页

### Note:

1. mg/kg = milligram per kilogram= ppm
2. N.D. = Not Detected (<MDL)
3. MDL = Method detection limit
4. "-" = Not Regulated

### 注释:

1. mg/kg =毫克每千克= ppm
2. N.D. = 未检出 (< MDL)
3. MDL = 方法检测限
4. "-" = 未规定

### -Di-(2-ethylhexyl) phthalate(DEHP), Benzylbutyl phthalate(BBP), Dibutyl phthalate (DBP), Diisobutyl phthalate(DIBP) Content—RoHS Directive 2011/65/EU Annex II amending Annex (EU)2015/863

### -邻苯二甲酸二(2-乙基己基)酯(DEHP)、邻苯二甲酸苯基丁酯(BBP)、邻苯二甲酸二丁酯(DBP)、邻苯二甲酸二异丁酯(DIBP)含量—RoHS 指令2011/65/EU附录 II 的修正指令(EU)2015/863

Test method: With reference to EN 14372:2004; Analysis was conducted by GC-MS.

测试方法: 参考 EN 14372:2004, 使用气相色谱质谱联用仪(GC-MS)进行分析。

Test Items 测试项目	Unit 单位	Result 结果	MDL	Limit 限值
Di-(2-ethylhexyl) phthalate (DEHP) 邻苯二甲酸二(2-乙基己基)酯(DEHP)	mg/kg	N.D.	50	1000
Benzylbutyl phthalate (BBP) 邻苯二甲酸苯基丁酯(BBP)	mg/kg	N.D.	50	1000
Dibutyl phthalate (DBP) 邻苯二甲酸二丁酯(DBP)	mg/kg	N.D.	50	1000
Diisobutyl phthalate(DIBP) 邻苯二甲酸二异丁酯(DIBP)	mg/kg	N.D.	50	1000

### Note:

1. mg/kg = milligram per kilogram= ppm
2. N.D. = Not Detected (<MDL)
3. MDL = Method detection limit

### 注释:

1. mg/kg =毫克每千克= ppm
2. N.D. = 未检出 (< MDL)
3. MDL = 方法检测限

This Test Report is issued by the Company subject to its General Conditions of Service printed overleaf or available on request and accessible at [www.cpstlab.com](http://www.cpstlab.com). Attention is drawn to the limitations of liability, indemnification and jurisdictional issues defined therein. Unless otherwise stated the results shown in the test report refer only to the sample(s) tested. This test report cannot be reproduced, except in full, without prior written permission of the Company. Any unauthorized alteration, forgery or falsification of the content or appearance of this report is unlawful and offenders may be prosecuted to the fullest extent of the law.

### **2.Halogens(Fluorine, Chlorine, Bromine, Iodine) Content— IEC/EN61249-2-21:2003**

### **2.卤素(氟、氯、溴、碘)含量测试— IEC/EN61249-2-21:2003**

Test Method: With reference to EN 14582:2007, analysis was performed by Ion Chromatograph(IC).

测试方法: 参考 EN 14582:2007, 使用离子色谱仪(IC)进行分析。

Test Item 测试项目	Unit 单位	Result 结果	MDL	Limit 限值
Fluorine(F) 氟(F)	mg/kg	N.D.	25	-
Chlorine(Cl) 氯(Cl)	mg/kg	100	25	900
Bromine(Br) 溴(Br)	mg/kg	N.D.	25	900
Iodine(I) 碘(I)	mg/kg	N.D.	25	-
Cl+Br 氯(Cl) +溴(Br) 之和	mg/kg	100	-	1500

Note:

1. mg/kg = milligram per kilogram = ppm
2. N.D. = Not Detected (< MDL)
3. MDL = Method Detection Limit

注释:

1. mg/kg = 毫克/千克 = ppm
2. N.D. = 未检出 (< MDL)
3. MDL = 方法检测限

This Test Report is issued by the Company subject to its General Conditions of Service printed overleaf or available on request and accessible at [www.cpstlab.com](http://www.cpstlab.com). Attention is drawn to the limitations of liability, indemnification and jurisdictional issues defined therein. Unless otherwise stated the results shown in the test report refer only to the sample(s) tested. This test report cannot be reproduced, except in full, without prior written permission of the Company. Any unauthorized alteration, forgery or falsification of the content or appearance of this report is unlawful and offenders may be prosecuted to the fullest extent of the law.

### 3. Phthalates Content

#### 3. 邻苯二甲酸酯含量

Test Method: With reference to US EPA 3540C:1996&US EPA 8270D:2007, analysis was performed by GC-MS.

测试方法: 参考 US EPA 3540C:1996&US EPA 8270D:2007, 使用气相色谱质谱联用仪(GC-MS)进行分析。

Test Item 测试项目	CAS No.	Unit 单位	Results 结果	MDL MDL
Di-(2-ethylhexyl) phthalate (DEHP) 邻苯二甲酸二(2-乙基己基)酯(DEHP)	117-81-7	%(w/w)	N.D.	0.005
Di-butyl phthalate (DBP) 邻苯二甲酸二正丁酯(DBP)	84-74-2	%(w/w)	N.D.	0.005
Butyl benzyl phthalate (BBP) 邻苯二甲酸丁苄酯(BBP)	85-68-7	%(w/w)	N.D.	0.005
Di-isononyl phthalate (DINP) 邻苯二甲酸二异壬酯(DINP)	28553-12-0 68515-48-0	%(w/w)	N.D.	0.010
Di-iso-decyl phthalate (DIDP) 邻苯二甲酸二异癸酯(DIDP)	26761-40-0 68515-49-1	%(w/w)	N.D.	0.010
Di-n-octyl phthalate (DNOP) 邻苯二甲酸二正辛酯(DNOP)	17-84-0	%(w/w)	N.D.	0.005
Di-iso-butyl ortho-phthalate(DIBP) 邻苯二甲酸二异丁酯(DIBP)	84-69-5	%(w/w)	N.D.	0.005

#### Note:

1. % = percentage by weight.
2. 0.0001% = 1 mg/kg.
3. MDL = Method Detection Limit.
4. N.D. = Not Detected (< MDL).

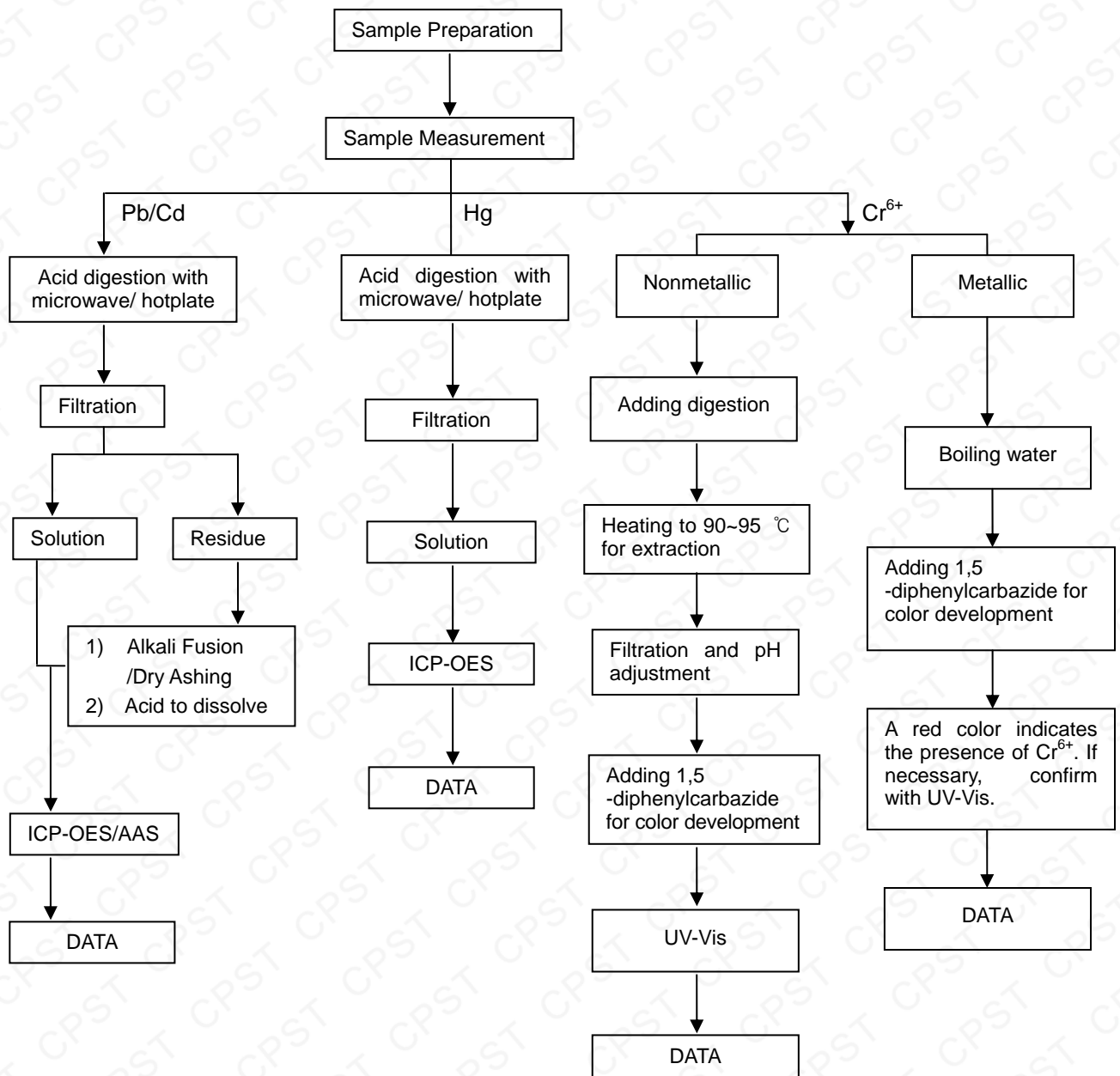
#### 注释:

1. % = 重量百分比。
2. 0.0001% = 1 mg/kg
3. MDL = 方法检出限
4. N.D. = 未检出(< MDL)

This Test Report is issued by the Company subject to its General Conditions of Service printed overleaf or available on request and accessible at [www.cpstlab.com](http://www.cpstlab.com). Attention is drawn to the limitations of liability, indemnification and jurisdictional issues defined therein. Unless otherwise stated the results shown in the test report refer only to the sample(s) tested. This test report cannot be reproduced, except in full, without prior written permission of the Company. Any unauthorized alteration, forgery or falsification of the content or appearance of this report is unlawful and offenders may be prosecuted to the fullest extent of the law.

### Pb/Cd/Hg/Cr<sup>6+</sup> Testing Flow Chart

- 1) Name of the person who made measurement: Alan Guo
- 2) Name of the person in charge of measurement: Cheryl Li
- 3) These samples were dissolved totally by pre-conditioning method according to below flow chart.  
(Cr<sup>6+</sup> test method excluded)

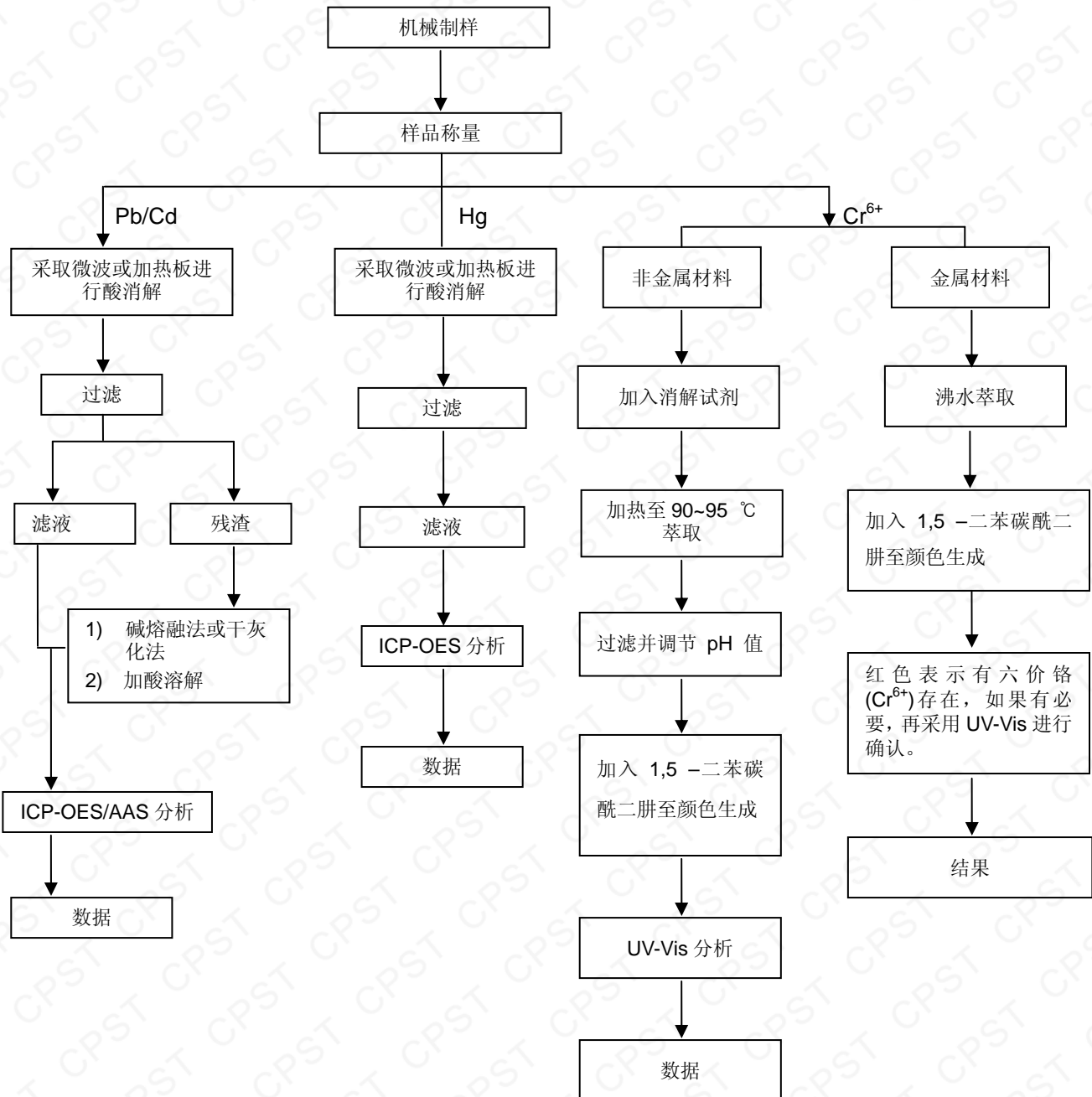


This Test Report is issued by the Company subject to its General Conditions of Service printed overleaf or available on request and accessible at [www.cpstlab.com](http://www.cpstlab.com). Attention is drawn to the limitations of liability, indemnification and jurisdictional issues defined therein. Unless otherwise stated the results shown in the test report refer only to the sample(s) tested. This test report cannot be reproduced, except in full, without prior written permission of the Company. Any unauthorized alteration, forgery or falsification of the content or appearance of this report is unlawful and offenders may be prosecuted to the fullest extent of the law.



### Pb/Cd/Hg/Cr<sup>6+</sup> 测试流程图

- 1) 分析人员: 郭剑锋
- 2) 监督人员: 李慧莲
- 3) 根据以下测试流程图样品在预处理方法中被完全溶解(Cr<sup>6+</sup> 测试方法除外)。

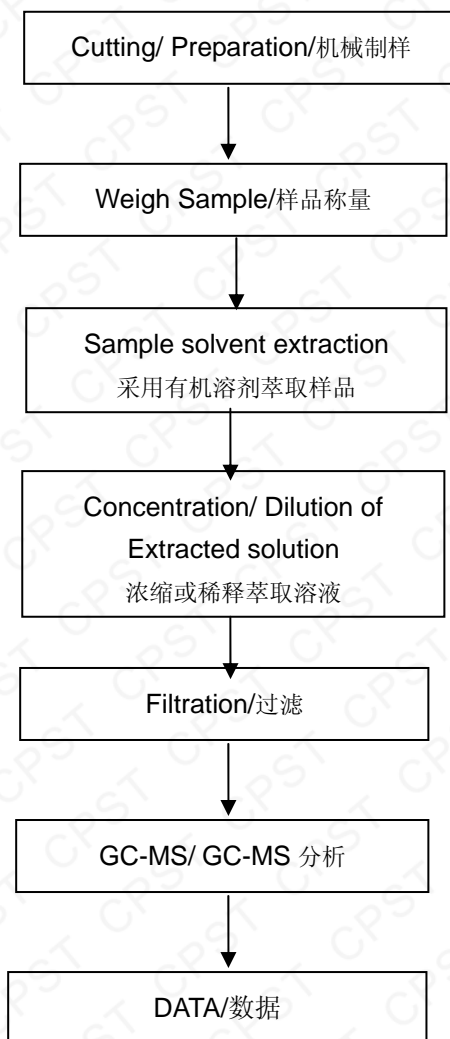


This Test Report is issued by the Company subject to its General Conditions of Service printed overleaf or available on request and accessible at [www.cpstlab.com](http://www.cpstlab.com). Attention is drawn to the limitations of liability, indemnification and jurisdictional issues defined therein. Unless otherwise stated the results shown in the test report refer only to the sample(s) tested. This test report cannot be reproduced, except in full, without prior written permission of the Company. Any unauthorized alteration, forgery or falsification of the content or appearance of this report is unlawful and offenders may be prosecuted to the fullest extent of the law.

## PBBs/PBDEs Testing Flow Chart

### 多溴联苯/多溴联苯醚 测试流程图

- 1) Name of the person who made measurement: Anndy Wang  
分析人员: 王光宇
- 2) Name of the person in charge of measurement: Cheryl Li  
监督人员: 李慧莲

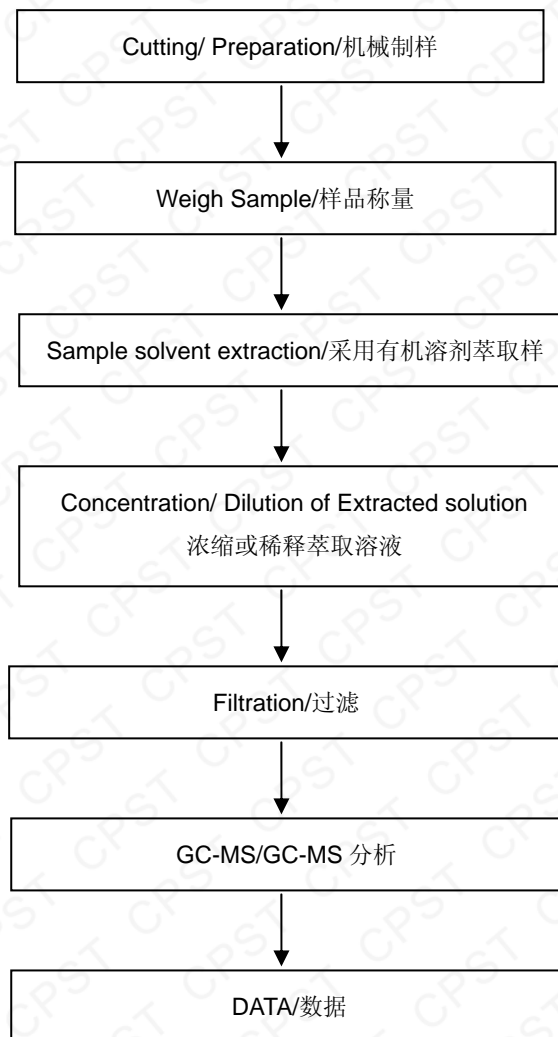


This Test Report is issued by the Company subject to its General Conditions of Service printed overleaf or available on request and accessible at [www.cpstlab.com](http://www.cpstlab.com). Attention is drawn to the limitations of liability, indemnification and jurisdictional issues defined therein. Unless otherwise stated the results shown in the test report refer only to the sample(s) tested. This test report cannot be reproduced, except in full, without prior written permission of the Company. Any unauthorized alteration, forgery or falsification of the content or appearance of this report is unlawful and offenders may be prosecuted to the fullest extent of the law.

## Phthalates Testing Flow Chart

### 邻苯二甲酸酯 测试流程图

- 1) Name of the person who made measurement: Anndy Wang  
分析人员: 王光宇
- 2) Name of the person in charge of measurement: Cheryl Li  
监督人员: 李慧莲

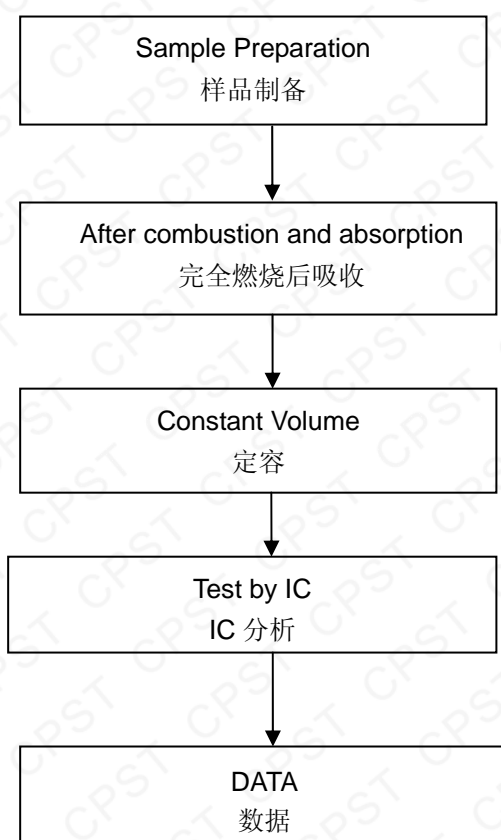


This Test Report is issued by the Company subject to its General Conditions of Service printed overleaf or available on request and accessible at [www.cpstlab.com](http://www.cpstlab.com). Attention is drawn to the limitations of liability, indemnification and jurisdictional issues defined therein. Unless otherwise stated the results shown in the test report refer only to the sample(s) tested. This test report cannot be reproduced, except in full, without prior written permission of the Company. Any unauthorized alteration, forgery or falsification of the content or appearance of this report is unlawful and offenders may be prosecuted to the fullest extent of the law.

## Halogens Testing Flow Chart

### 卤素测试流程图

- 1) Name of the person who made measurement: Anndy Wang  
分析人员: 王光宇
- 2) Name of the person in charge of measurement: Cheryl Li  
监督人员: 李慧莲

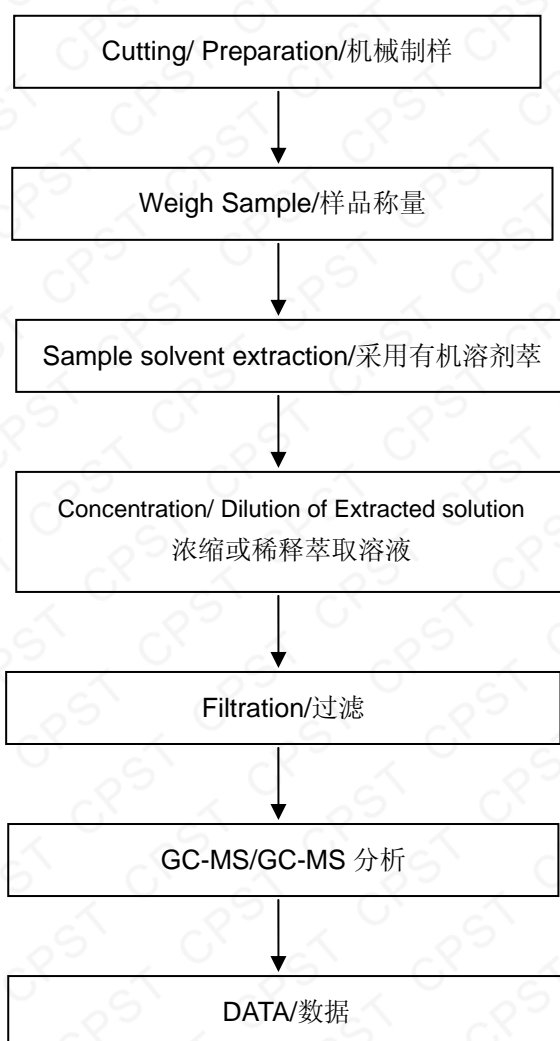


This Test Report is issued by the Company subject to its General Conditions of Service printed overleaf or available on request and accessible at [www.cpstlab.com](http://www.cpstlab.com). Attention is drawn to the limitations of liability, indemnification and jurisdictional issues defined therein. Unless otherwise stated the results shown in the test report refer only to the sample(s) tested. This test report cannot be reproduced, except in full, without prior written permission of the Company. Any unauthorized alteration, forgery or falsification of the content or appearance of this report is unlawful and offenders may be prosecuted to the fullest extent of the law.

## Phthalates Testing Flow Chart

### 邻苯二甲酸酯 测试流程图

- 1) Name of the person who made measurement: Anndy Wang  
分析人员: 王光宇
- 2) Name of the person in charge of measurement: Cheryl Li  
监督人员: 李慧莲



\*\*\* End of Report \*\*\*

\*\*\* 报告结束 \*\*\*

This Test Report is issued by the Company subject to its General Conditions of Service printed overleaf or available on request and accessible at [www.cpstlab.com](http://www.cpstlab.com). Attention is drawn to the limitations of liability, indemnification and jurisdictional issues defined therein. Unless otherwise stated the results shown in the test report refer only to the sample(s) tested. This test report cannot be reproduced, except in full, without prior written permission of the Company. Any unauthorized alteration, forgery or falsification of the content or appearance of this report is unlawful and offenders may be prosecuted to the fullest extent of the law.